

THE POSSIBILITIES ARE INFINITE



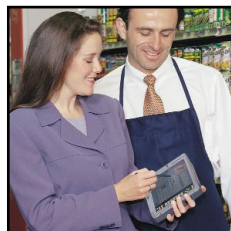
Stylistic® LT P-600



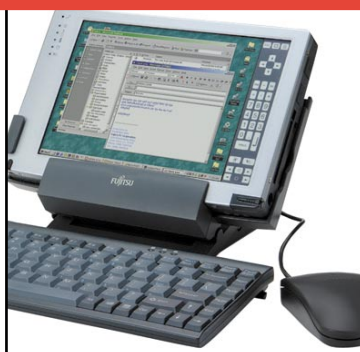
Features an Intel® Pentium® III processor 600MHz, up to 256MB of SDRAM, and a 15GB hard drive.....



Smaller than a notebook and weighing less than 2.7 lbs, the Stylistic LT P-600 is as comfortable to use as it is powerful.



An embedded 56K¹ V.90 modem and a 10/100Mbps Ethernet module² keep your work force in touch and productive.



Choose from two brilliant LCD screens including a truly outstanding outdoor screen that also works under low-light conditions.

SPECIFICATIONS

Form Factor	Compact pen tablet computer
Processor	Intel® Pentium® III processor 600MHz with SpeedStep™ technology; 256KB L2 Cache; 100MHz system bus speed; 32-bit bus architecture
Memory	128MB or 256MB SDRAM; One memory slot – Max. 256MB SDRAM
Display	8.4" Transflective SVGA TFT - outdoor/indoor use; 8.4" Transmissive SVGA TFT - indoor use; Max. resolution – 800 x 600 x 256K colors; 0.21mm dpi
Digitizer	Passive with palm rejection technology; Liquid-filled digitizer technology; Low glare
Video	ATI® Rage™ Mobility-M with 4MB video memory; Simultaneous support for internal and external video; Max. external resolution – 1024 x 768 x 16M colors
Storage	15GB hard drive, ultra ATA, shock-mounted
Audio	Sound Blaster®-compatible audio chipset; Built-in speaker and microphone; Microphone and headphone jacks
Communications	Built-in 56K ¹ V.90 modem; Built-in 10/100Mbps Ethernet ²
Expansion	One Type II CardBus PC Card slot; One Type II Compact Flash slot
System Ports	USB port; DC-in jack; Microphone jack; Headphone jack (stereo); Modem jack (RJ-11); IrDA 1.1 (FIR, 4Mbps); Wireless IR keyboard port; Docking contacts
Mini-Dock Connections	PS/2 mouse port; PS/2 keyboard port; 2nd USB port; Serial port (DB-9); Ethernet jack (RJ-45); Parallel Port; Video Port (DDC-Compliant); Floppy disk drive connector; DC-in jack
Battery	3400mAh battery; Bridge battery supports warm swapping
AC Adapter	Auto-sensing, 100-240VAC, 50/60Hz; 16VDC, 3.75A
Security	Kensington lock slot
Dimensions/Weight	Standard: 9.6" x 6.3" x 1.1"(min)/1.6" (max); 2.65 lbs. with battery Metric: 244mm x 160mm x 28mm (min)/40mm (max); 1.2Kg with battery
Operating System	Microsoft® Windows® 98SE with Pen Services and PenX 2.02; Microsoft Windows 2000 Professional with PenX 2.02
Power Management	Intel/Microsoft® ACPI 1.0
Environmental	Standard: <i>Operating Temperature (with power management):</i> 32° to 104°F; Humidity: 20% to 80% RH (non-condensing) <i>Non-operating Temperature:</i> -4° to 140°F; Humidity: 8% to 80% RH (non-condensing) Metric: <i>Operating Temperature (with power management):</i> 0° to 40°C; Humidity: 20% to 80% RH (non-condensing) <i>Non-operating Temperature:</i> -20° to 60°C; Humidity: 8% to 80% RH (non-condensing)
Compliance	<i>General:</i> FCC Part 15 Class B; CISPR 22: 1997, Class B; EN55022: 1998, Class B; I TE EN55024 (EN 61000-4-2, -3, -4, -5, -6, -8, -11); EN 61000-3-2, -3; FCC, Part 68; IC CS03, Issue 8 <i>Integrated Wireless LAN EMI:</i> FCC Part 15, Subpart B & C; RSS-210; ETSI 300-328 (Emission); ETSI 300-826 (Immunity); UL & cUL mark -UL 1950 Third Ed.; TUV T-mark - EN60950: 1992+A1+A2+A3+A4+A11; CB certification – IEC 950 1992+A1+A2+A3+A4

SERVICE

Warranty	Three-year International Limited Warranty ³ ; Fujitsu Premium Care service plans available
Accessories	Mini-dock; External 3.5" floppy disk drive; Wireless IR keyboard; 3400 mAh Lithium-ion battery (spare); External battery charger; Video-out adapter; DB-9 serial adapter; AC adapter (spare); Auto adapter (12-16VDC input); Compact desk stand; Slip case; Portfolio case; Holster; Screen protector (12-pack); Spare pens (5-pack); Smart Card holder; Wireless Modular Kit Visit www.fujitsupc.com or call 1-800-831-3183 for a complete listing of Fujitsu accessories

Fujitsu PCs use genuine Windows® operating systems
<http://www.microsoft.com/piracy/howtotell>

1. Actual speeds over U.S. telephone lines may vary and are less than 56Kbps due to current FCC regulations and line conditions. The internal modem on the Fujitsu Stylistic LT P-600 is only qualified for use with telephone systems in select countries. The modem may not operate in countries not on the list. For a list of model numbers with corresponding certified countries, please check www.fujitsupc.com/modems. 2. Mini-dock required for Ethernet connection. 3. Service and warranty turnaround time may vary by country and product. Warranty service provided only by Fujitsu pen tablet PC Authorized Service Centers (ASCs). For a list of ASCs, please call 1-800-8Fujitsu or 901-259-5790. Fujitsu and the Fujitsu logo are registered trademarks of Fujitsu Limited. Stylistic is a registered trademark of Fujitsu PC Corporation. Microsoft and Windows are registered trademarks of Microsoft Corporation. Intel, the Intel Inside logo, and Pentium are registered trademarks and SpeedStep is a trademark of Intel Corporation or its subsidiaries in the United States and other countries. All other trademarks and service marks mentioned herein are the property of their respective companies.

We cannot guarantee the accuracy of the contents of this document. We disclaim liability for errors or omissions of further changes.